



Information for Exchange Students

General Information

Item	Content
Country	Japan
City	Hachioji, Tokyo
Year of Founding	1971
Type of Institution	Private
Majors (Undergraduate)	Economics, Business Administration, Law, Letters, Education, Science and Engineering, Nursing, International Liberal Arts
Office Address	Soka University, International Affairs Office 1-236 Tangi-machi, Hachioji-shi Tokyo, Japan 192-8577
Office Telephone / Fax	+81-42-691-8200 / +81-42-691-2039
Website	Homepage: http://www.soka.ac.jp/en/ YouTube: https://youtu.be/bm4Vnm6gnrw

Academic Calendar

The newest academic calendar will be informed one month before the arrival date.

	Fall semester	Spring semester
Period of semester	mid-September - late-January	early-April - late-July
Mid-term exam periods	late-October - mid-November	mid-May - mid-June
Final-exam periods	late-January	late-July
Winter/Summer break	late-December - early-January	late-July - mid-September

<https://www.soka.ac.jp/campuslife/learning/lesson/teisiken>

Nomination and Application

① Nomination

Students must be nominated by their home institution via the following form by the designated deadline:

SOKA University Exchange Student Nomination Form URL:

<https://forms.office.com/r/SuTAAqja5Y>

	Fall semester	Spring semester
Deadlines	March 15	October 15

② Application

Students must register and complete the online application form and submit necessary documents to Soka University.

	Fall semester	Spring semester
Deadlines	March 31	October 31

Courses and Language Requirements

- The tuition fees will be waived for all exchange students.
- Each class is 90 minutes.
- Students must take at least 7 classes per week.
- Exchange students are eligible to enroll in Japanese Language Course below and Physical Education courses.
- Syllabus can be found from the following link: <http://plas.soka.ac.jp/csp/plas/syllabus11.csp>

Please also see "[How to find syllabus](#)."

	Course List	Language Requirements	Credits
Undergraduate Course (in Japanese)	AY2023-2024	Japanese Language Proficiency Test (JLPT) , N2 or above	2 - 4 (depends on the course)
Undergraduate Course (in English)	AY2023-2024	English proficiency of TOEFL-IBT 71 or IELTS 5.5 or CEFR B2 or equivalent	2 - 4 (depends on the course)
Japanese Language Course	Tentative	N/A ^{*1}	1 - 2 ^{*2} (depends on the course)

^{*1} Japanese language classes are categorized into seven proficiency levels: ES to E5 as below.

Students going-on to their 1st semester: Level of class will be chosen, based on the results of placement test.

Students going-on to their 2nd semester and on: Students will be placed in the subsequent class.

For example, students who were E0 will proceed to E1. Students who were in E5 will remain in E5.

*2 Japanese language classes can be registered up to 8 credits per semester.

Japanese Language Levels

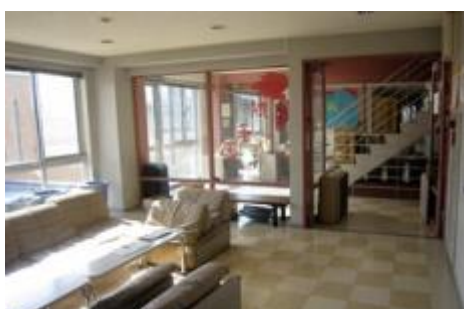
Level of JLPT	Category	Proficiency Level
Below N5	E5	Minimal but necessary Japanese language study level to live in Japan
Below N5	E0	Basic level
N5 equivalent	E1	Basic level
N4 equivalent	E2	Intermediate level
N3 equivalent	E3	Intermediate level
N2 equivalent	E4	Pre-Advanced level
N1 equivalent	E5	Advanced level

Accommodation

Soka University has four dormitories for exchange students from our partner universities. These dormitories focus on creating a proper environment for students to develop cooperation and autonomy skills while living together with students from all parts of Japan and the world. Although it might be difficult to adapt into an environment with diverse cultures, habits and different opinions, the students will be able to cooperate and create deep bonds of friendship by the time of dormitory graduation!

Male Dormitory	Address
Hoyu Dormitory	1-483 Takiyama-machi, Hachioji-shi, Tokyo
Takiyama International Dormitory	1-236 Tangi-machi, Hachioji-shi, Tokyo

Female Dormitory	Address
Cosmos Dormitory	1-582-1 Takiyama-machi, Hachioji-shi, Tokyo
Yuko Dormitory (in Japanese)	1-481 Takiyama-machi, Hachioji-shi, Tokyo



Hoyu Dormitory



Takiyama International Dormitory



Cosmos Dormitory

Yuko Dormitory (in Japanese)